

**Scale Ice
Makers Units**

**Unité de
Production
de Glace
en Ecailles**

**Scherbeneis
Produktions-
einheit**

**Fabricador
de Hielo
en Escamas**

**Unità di
Produzione
Ghiaccio
in scaglie**

Fresh Water	Sea Water	24h		[v/Hz/ph]	[WxDxH mm]		[WxDxH inches]	R404a or R22	
		Ambient T. +25°C (77°F) Water T. +15°C (59°F)	Ambient T. +32°C (90°F) Water T. +21°C (70°F)		[kg]	[lbs]			[kg]
EVE 200 AS	EVE 200 AS SW	1.900	4.188	1.600	3.530	400/50Hz/3ph 230/60Hz/3ph	2150x1900x1360	84 5/8" x 74 3/4" x 53 1/2"	R404a or R22
EVE 300 AS	EVE 300 AS SW	2.900	6.392	2.300	5.070	400/50Hz/3ph 230/60Hz/3ph	2150x1900x1530	84 5/8" x 74 3/4" x 60 1/4"	R404a or R22
EVE 400 AS	EVE 400 AS SW	3.900	8.596	3.500	7.720	400/50Hz/3ph 230/60Hz/3ph	2150x1900x1750	84 5/8" x 74 3/4" x 68 7/8"	R404a or R22
EVE 650 AS	EVE 650 AS SW	6.200	13.665	5.800	12.790	400/50Hz/3ph 230/60Hz/3ph	2850x2250x1810	112 1/4" x 88 5/8" x 71 1/4"	R404a or R22
EVE 800 AS	EVE 800 AS SW	7.650	16.861	7.500	16.530	400/50Hz/3ph 230/60Hz/3ph	3450x1990x2020	135 7/8" x 78 3/8" x 79 1/2"	R404a or R22
EVE 1000 AS	EVE 1000 AS SW	9.800	21.599	9.000	19.840	400/50Hz/3ph 230/60Hz/3ph	4350x2310x2410	171 1/4" x 91" x 94 7/8"	R404a/R22/R717
EVE 1300 AS	EVE 1300 AS SW	12.500	27.550	11.000	24.250	400/50Hz/3ph 230/60Hz/3ph	4850x2310x2400	191" x 91" x 94 1/2"	R404a/R22/R717
EVE 1500 AS	EVE 1500 AS SW	15.000	33.060	13.500	29.760	400/50Hz/3ph 230/60Hz/3ph	4850x2310x2695	191" x 91" x 106 1/8"	R404a/R22/R717
EVE 2400 AS	EVE 2400 AS SW	23.000	50.692	21.000	46.290	400/50Hz/3ph 230/60Hz/3ph	6800x2340x2200 2250x2100x2200	267 3/4" x 92 1/8" x 86 5/8" 88 5/8" x 82 5/8" x 86 5/8"	R404a/R22/R717

1

**Years Warranty
Ans de Garantie
Jahre Garantie
Años de Garantía
Anni di Garanzia**

Subject to certain limitations and exclusions
Assujettie aux limites et exclusions prescrites
Abhängig von Bestimmten Einschränkungen und Ausnahmen
Sujeta a algunas limitaciones y exclusiones
Soggetta ad alcune limitazioni ed esclusioni

CE
0035

This product qualifies for the following listings:

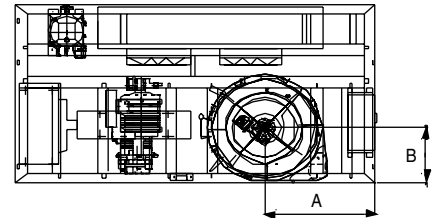
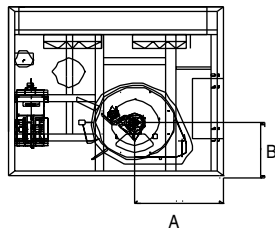
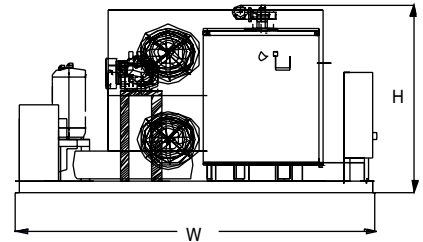
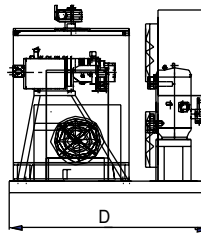
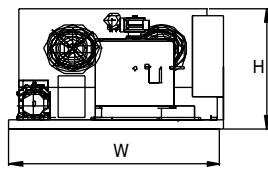
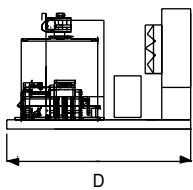


EVE

LAND

EVE200/300/400/650

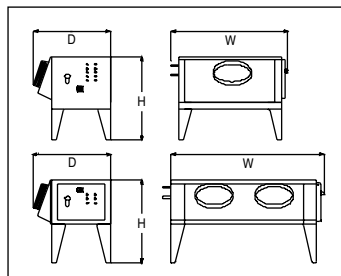
EVE800/1000/1300/1500



Fresh Water	Sea Water	Nominal Electrical Power (1)	W mm	D mm	H mm	A mm	B mm	Ice Outlet (ø mm)	Inlet Water	Overflow(ø mm)	[kg]	[lbs]	[kg] [lbs]
EVE 200 AS	EVE 200 AS SW	12,00	1900	1650	1160	750	435	420	1/2" gas	10	780	1.719	t.b.a.
EVE 300 AS	EVE 300 AS SW	16,00	1900	1650	1330	750	435	420	1/2" gas	10	800	1.763	t.b.a.
EVE 400 AS	EVE 400 AS SW	20,00	1900	1650	1550	750	435	420	1/2" gas	10	1.150	2.535	t.b.a.
EVE 650 AS	EVE 650 AS SW	35,00	2600	2000	1610	1035	545	670	1/2" gas	10	2.000	4.408	t.b.a.
EVE 800 AS	EVE 800 AS SW	35,00 (*)	3200	1740	1820	990	535	670	1/2" gas	10	2.200	4.849	t.b.a.
EVE 1000 AS	EVE 1000 AS SW	40,00 (*)	4100	2060	2210	1265	545	840	3/4" gas	10	2.950	6.502	t.b.a.
EVE 1300 AS	EVE 1300 AS SW	55,00 (*)	4600	2060	2200	1135	545	840	3/4" gas	10	3.750	8.265	t.b.a.
EVE 1500 AS	EVE 1500 AS SW	70,00 (*)	4600	2060	2495	1135	545	840	3/4" gas	10	4.300	9.477	t.b.a.
EVE 2400 AS	EVE 2400 AS SW	80,00 (*)	6500 1990	2150 1680	2000 2400	see split version	see split version	1030	3/4" gas	10	5050 2400	11.120 5.285	t.b.a.

1) Referred to fresh water versions

*Screw compressor



Model	Electrical Power KW	W mm	D mm	H mm	Net weight kg	Packing dimensions WxDxH
UC-200ASR	8,5	1390	870	1290	310	1500x1000x1450
UC-300ASR	11,4	1775	870	1290	430	1900x1000x1450
UC-400-ASR	14,4	2025	1070	1465	510	2200x1200x1600

Minimum	Maximum
2°C (36°F)	40°C (104°F)
5°C (41°F)	35°C (95°F)
-10%	+10%
1 BAR 14 psi	5 BAR 70 psi

Features: heavy basement frame in HIB iron, galvanized; AISI 304 Stainless steel evaporator complete of expansion valve /refrigerant level control (R404a/R22); base and cover in Peralluman; dosing water pump; dripping-pan; gear-motor with system for ice-scraper rotation; semi-hermetic /screw compressor; Liquid receiver and oil separator; Filters for suction and liquid lines; oil filters for version 1000/2400; Copper piping with valves on main components in order to ease maintenance; Air cooled condenser; Automatic electrical control panel complete of main switch, power and auxiliary contactors, voltmeter and ammeter, pressure switch (refrigerant high/low/oil), fan protections, ice-scraper protection, pump-down control. All versions are certified CE/PED.

Caractéristiques techniques: Structure portante HIB en acier galvanisé; évaporateur en acier inox AISI 304 complet de détendeur /contrôle de niveau (R404a/R22); base et couvercle en Peralluman; pompe dosage eau/sel; bassin écoulement eau; moteur qui entraîne fraise hélicoïdale acier inox; compresseur semi-hermétique/vis; réservoir de liquide et séparateur d'huile; filtres sur tuyaux aspiration et liquide; filtre huile pour modèles 1000/2400; tuyauterie en cuivre avec vanne sur les principaux composants pour simplifier l'entretien; condensateur à air; tableau électrique complet de interrupteur général, contacteurs puissance et auxiliaires, voltmètre et ampèremètre, pressostats (réfrigérant haute, basse et huile), protections ventilateurs et fraise, pump-down control. Tous les modèles sont certifiés CE/PED.

Technische Beschreibung: Trägerhäuse HIP aus verzinktem Stahl. Verdampfer aus AISI 304 Edelstahl komplett mit Expansionsventil und Kältemittelfüllstandsanzeige (R404a/R 22). Rahmen und Abdeckung aus Peralluman. Dosierpumpe für Salz /Wasser. Auffangschale. Getriebemotor mit Eisbrechereinheit. Halbhermetischer Verdichter oder Schraubenverdichter. Kältemittelsammler und Ölabscheider. Trockner in Saug- und Flüssigkeitsleitung. Ölfilter für die 1000/2400 Modelle. Absperrventile in den Kupferrohrleitungen für die leichte Wartung. Luftverflüssiger (AS). Elektromechanische Anzeige mit Hauptschalter, Leistungs- und Hilfsschutz mit Spannungs- und Ampereanzeige, Druckschalter für (Hoch/Nieder/ Öl). Schutzvorrichtung für Lüfter und Eisbrecher, Pump-down Schaltung. Alle Modelle sind zertifiziert mit CE/PED.

Características técnicas: Estructura portante HIB de acero galvanizado; evaporador de acero AISI 304 compuesto de válvula termostática/control de nivel (R404a/R22); base y tapa de Peralluman; bomba alimentación agua/sal; bandeja desagüe; motor rotación rompe-hielo de acero inox; compresor semihermético/tornillo; reserva de líquido y separador aceite; filtros en tubería aspiración y líquido; filtro aceite para modelos 1000/2400; tubería en cobre con válvulas de parcialización en todos los componentes principales para simplificar el mantenimiento; condensador aire; cuadro eléctrico compuesto de interruptor general, contactores potencia y auxiliares, voltmetro y ampermetro, presostatos (refrigerante alta, baja y aceite), protecciones ventiladores y rompe-hielo, control pump-down. Todos los modelos están certificados CE/PED.

Caratteristiche tecniche: Struttura portante HIB in acciaio zincato; evaporatore in acciaio inox AISI 304 completo di valvola termostatica/regolatore di livello (R404a/R22); base e coperchio in Peralluman; pompa dosatrice acqua/sale; ghiotta raccogli condensa; motoriduttore per rotazione rompihiaccio in acciaio inox; compressore semi-hermetico/vite; ricevitore di liquido e separatore d'olio; filtri su mandata e aspirazione; filtro olio per modelli 1000/2400; tubazioni in rame con rubinetti di parzializzazione sui principali componenti per facilitare la manutenzione; condensatore ad aria; quadro elettrico completo di interruttore generale, contattore di potenza e ausiliari, voltmetro e amperometro, pressostati (refrigerante alta, bassa e olio), protezioni ventilatori e rompihiaccio, controllo pump-down. Tutte le macchine sono certificate CE/PED.



Scotsman®

The one the world relies on.

Certified ISO 9001:2000

USA, Canada, Latin America
Scotsman Ice Systems USA
775 Corporate Woods Parkway
Vernon Hills, IL 60061
Ph: (+1) 847 215-4550
Fax (+1) 847 913-9844
customer.service@scotsman-ice.com

Europe
Scotsman Europe-Frimont S.p.A.
Via Puccini, 22
20010 Pogliano (Milano) Italy
Ph: (+39) 02-93960208
Fax: (+39) 02-93960201
scotsman.europe@frimont.it

Asia and Pacific
Scotsman Ice Systems-Frimont S.p.A. (R.O.)
627A Aljunied Road #04-04 Biztech Centre
Singapore 389842
Ph: (+65) 6738 5393
Fax: (+65) 6738 1959
scotsice@singnet.com.sg

China
Scotsman Ice Systems
(Shanghai) Co., Ltd
Room 405-407 Jing'an China Tower
1701 West Beijing Road-200040 Shanghai
Ph: (+86) 21-62476056-Fax: (+86) 21-62476126
scotsmansh@online.sh.cn

Middle East & N. Africa
Scotsman Ice Systems Dubai Office
P.o. Box 21648
Sharjah - U.A.E.
Mobile: Ph: (+971) 505505980
Fax (+971) 6-5654063
scotsman@eim.ae

ICE SYSTEMS
(Pty) Ltd
21Atlas rd, Dunswart, Boksburg
P.O.Box 6766, Dunswart, 1058
Tel: (+27) 11-9185065
Fax: (+27) 11-9185068
www.icesystems.co.za